



## **CBSS-Baltic 21 – the main cooperation platform on low emission development in the Baltic Sea region**

---

Council of the Baltic Sea States, CBSS - Leader of Horizontal Action 'Sustainable Development' (to be 'HA Climate' from end June 2015) in the EU Strategy for the Baltic Sea Region, EUSBSR

# Council of the Baltic Sea States, CBSS

- Overall political forum for regional inter-governmental cooperation in the BSR
- Members: the 11 states of the Baltic Sea Region (incl. Russia, Norway and Iceland) as well as the European Commission
- Steered by representatives of the BSR Ministries of Foreign Affairs
- [www.cbss.org](http://www.cbss.org)

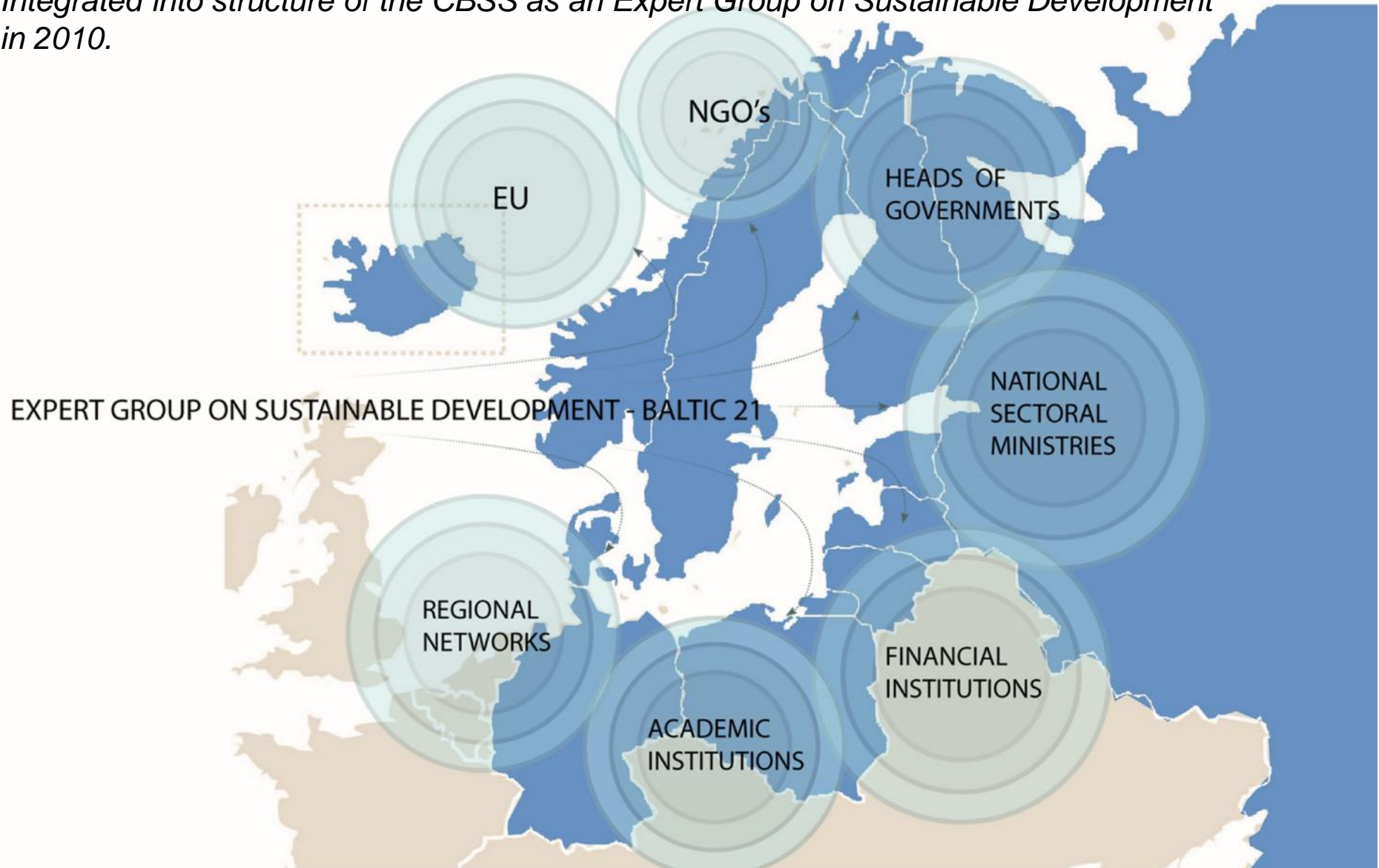


# Multi-stakeholder involvement...

*Initiated by the Prime Ministers of BSR countries in 1996*

*Regional expression of the global Agenda 21*

*Integrated into structure of the CBSS as an Expert Group on Sustainable Development in 2010.*



# MAIN REFERENCE DOCUMENTS



1. Climate Change
2. Sustainable Urban and Rural Development
3. Sustainable Consumption and Production
4. Innovation and Education for Sustainable Development



1. Climate Change Adaptation
2. **Low Emission Development**

# Actions & Activities for Low emission development

## —● Establishing a strategic dialogue between governments for supporting the development and implementation of national low carbon development policies

- Support harmonization of rules and plans between BSR planning authorities to ensure progress of the BSR towards long-term (2050) low carbon development (LCD);
- Promote climate-resilient and resource efficient solutions through exchanging best available data, approaches and measures in LCD;
- Accelerate the transition to a circular economy by facilitating policy-science-business dialogues and dissemination of knowledge and deployment of best available technologies on green and low carbon technologies
- Stimulate uptake of green public procurement



# Actions & Activities for Low emission development

- Raise the public awareness on climate change and low-emission lifestyles
- Support the LCD research cooperation in order to provide planning authorities with comprehensive information on long term alternatives;
- development of e-based harmonization and improvement tools and databases for research and policy development needs including project financing;



Thank you!



International Permanent Secretariat of the CBSS  
Slussplan 9/ P.O. Box 2010, 103 11 Stockholm, Sweden  
Ms Krista Kampus, Head of Baltic 21 Unit, [krista.kampus@cbss.org](mailto:krista.kampus@cbss.org)  
[@CBSSBaltic21, www.cbss.org](https://www.cbss.org)